



# Community Based Long-Term care in Thailand

Presented in Asia-Pacific Economic Cooperation Meeting  
“Capacity Building for Community Based Long-Term Care”  
October 23, 2019



By Dr. Atthaphon KAEWSAMRIT  
Department of Health, Thailand





# Contents

- ✧ LTC
- ✧ Financing
- ✧ Human resources
- ✧ Monitoring and evaluation
- ✧ Institutional ties



**LTC** is a system of activities undertaken by informal caregivers (family, friends, and/or neighbours), and/or professionals (health, social, and others) to ensure that a person who is not fully capable of self-care can maintain the highest possible quality of life, according to his or her individual preferences, with the greatest possible degree of independence, autonomy, participation, personal fulfillment, and human dignity.

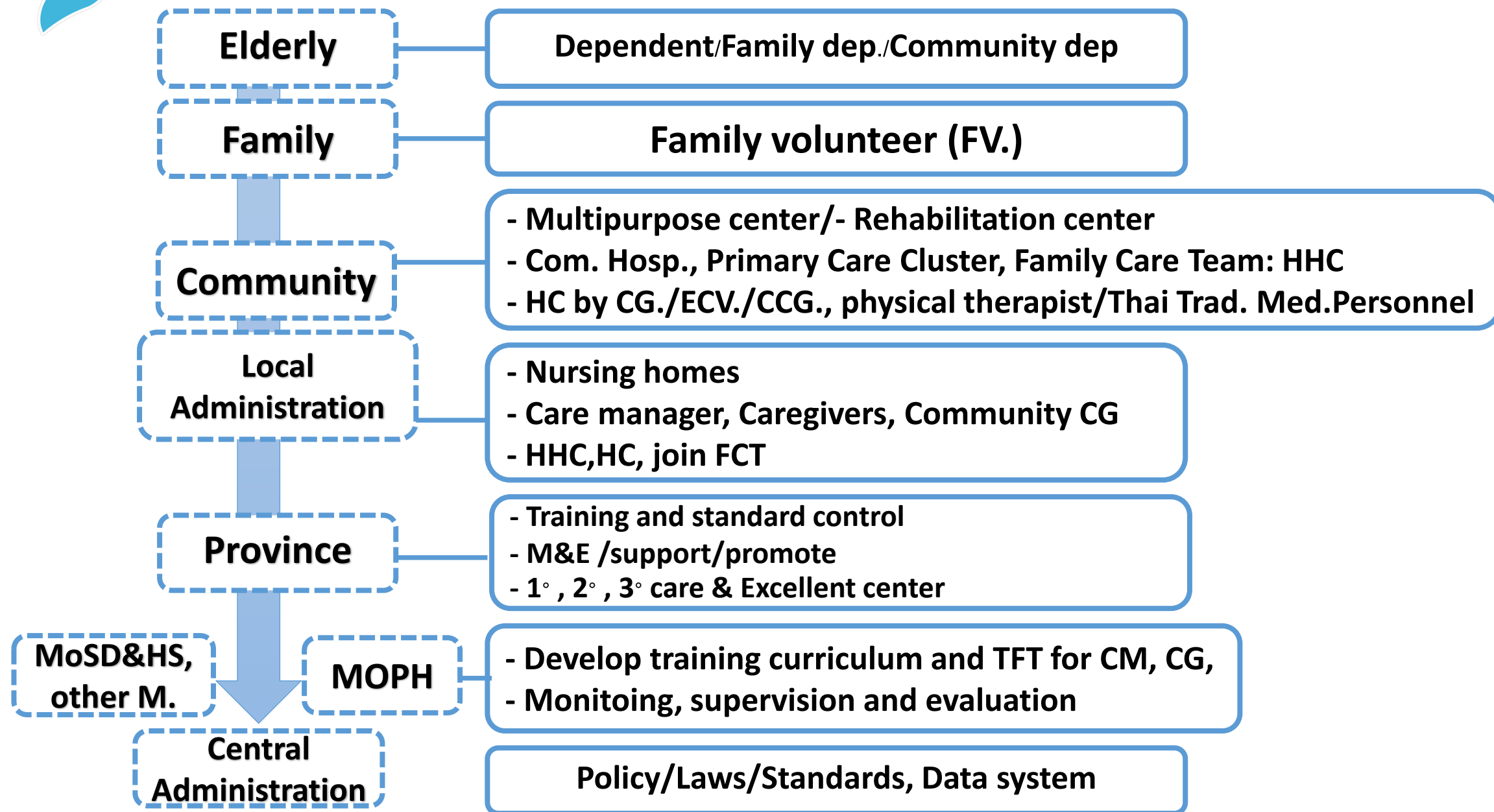


## **7 Criteria of Sub-district Model on CB Long-term care**

- |          |   |
|----------|---|
| <b>1</b> | <b>Having elderly data classified into 3 groups according to ADL assessment</b> |
| <b>2</b> | <b>Having quality elderly club</b>  |
| <b>3</b> | <b>Having volunteer to take care of the elderly in community</b>                |
| <b>4</b> | <b>Having good system of Home Health Care</b>                                   |
| <b>5</b> | <b>Having system to take care of dependent elderly (Integrated care, 3C)</b>    |
| <b>6</b> | <b>Having dental health promotion and prevention in sub-district.</b>           |
| <b>7</b> | <b>Having sub-district Committee for managing care of dependent elderly</b>     |



# CB Long Term Care Services in Thailand



The background is a deep blue and purple space scene. In the top left, there's a large planet with horizontal stripes. Below it, a smaller planet with a ring system. In the top right, an astronaut in a white suit floats, holding a long, thin, looping tether. The bottom right corner features a large, cratered moon. The entire scene is filled with numerous small white stars and larger, four-pointed starburst graphics. The title text is centered in a bold, green, sans-serif font.

# **1. Financing Community Based Long-term-Care (CBLTC)**



# Financing Community Based Long-term-Care

- ✧ CBLTC was financed under Universal Health Coverage Scheme
- ✧ There were several funds under UHC to support CBLTC:
  - ✧ Long-Term Care Fund
  - ✧ Sub-district Health Security Fund (P&P)
  - ✧ Rehabilitation Fund

# Financing Community Based Long-term-Care

- ✦ Home Improvement Fund from MHD&HS, Provincial Administration, Local Adm., Private agency, the Thai Red-cross Society, etc.
- ✦ Community Donation (including temple)/ Labour
- ✦ MoE (informal education center in the region) supports training of CG.



The background is a deep blue and purple space scene. In the top left, there's a large planet with horizontal stripes. Below it is a smaller planet with a ring. In the top right, an astronaut in a white suit floats, holding a long, thin, looping tether. The bottom right corner features a large, cratered moon. The entire scene is filled with numerous small white stars and larger, four-pointed starburst shapes. Abstract, wavy shapes in shades of purple and blue are layered in the background, creating a sense of depth and movement.

## 2. Human resources

# Human resources

## Main resources:

- ✧ Family Care Team
- ✧ Care Manager
- ✧ Caregiver
  - ✧ Family caregiver
  - ✧ VHV → Elderly caregiver volunteer (train 70 hours) – pay incentive 600 Baht/month
  - ✧ Community caregiver (new-ECG+50 hrs. training) – monthly payment by Local Administration



# Human resources

- ✧ LTC was implemented as integrated care through District and Sub-district Health Committee.
- ✧ Family Care Team (Fam. Med./Preventive Med Physician, nurse (care manager), physiotherapist, nutritionist, pharmacist, psychologist, Thai traditional medicine personnel, elderly care giver volunteer, community caregiver, personnel from Local administration, elderly club rep., VHV., monk, etc ) visits dependent elderly at home and make individual care plan for each elderly.

# Care personnel



Family Care Team

- Consult/Give an advice
- Joint plan of care for the elderly



Care manager

- Assessment, make elderly care plan
- Care conference, implement, M&E
- CM 1 person : 35 – 40 elderly people.



Care giver, CCG

- Assessment/Care for the elderly: CP
- Adjust environment
- Report case to care manager
- CG 1 person : 5 – 7 elderly people.



Family Caregiver

- Care for family members.



# Human resources

## Building Capacity

- DoH developed Care Manager & Caregiver Curriculum and do training for the trainer for regional and provincial personnel.
- Regional and provincial trainers trained CM & CG at district and sub-district levels.



The background is a deep blue and purple space scene. In the top left, there's a large planet with horizontal stripes. Below it is a smaller planet with a ring. In the top right, an astronaut in a white suit floats, holding a long, thin, looping tether. The bottom right corner features a large, cratered moon. The entire scene is filled with numerous small white stars and larger, four-pointed starburst patterns. The text "3. Monitoring and evaluation" is centered in a bold, yellow font.

### **3. Monitoring and evaluation**



# Monitoring and evaluation

- ✦ HP personnel at provincial level and Regional Health Center (under DOH) monitor, supervise and evaluate Tambol (sub-district) LTC.
- ✦ Inspector from MoPH & DoH monitor & supervision through inspection system



# Monitoring and evaluation

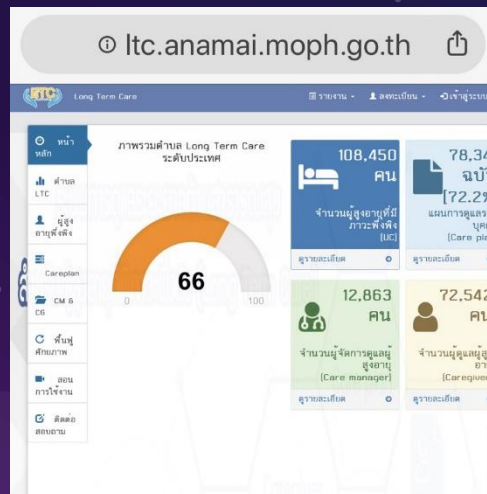
- ✧ Assessment of Tambol LTC
- ✧ Best practices Tambol LTC were reward annually by DoH.





# Monitoring and evaluation

- ✧ Monitor through reporting system
  - ✧ 3 C program (registration of Tambol LTC, Care managers, Caregivers, and Care plan on line)
  - ✧ Report to DoH monthly meeting, Inspector meeting.



The screenshot shows the login page for the LongTermCare system. The title is 'LongTermCare' and the subtitle is 'ระบบดูแลผู้สูงอายุและผู้มีภาวะพึ่งพิง (LTC)'. The main heading is 'กรณารอกข้อมูลเพื่อเข้าสู่ระบบ' (Please enter information to log in). There are two input fields: one for a phone number (6108922218676) and another for a password (masked with dots). Below the fields, there is a link 'ลืมรหัสผ่าน' (Forgot password) and a button 'เข้าสู่ระบบ' (Log in).

The background is a deep space scene with a dark blue and purple gradient. It is filled with numerous small white stars and larger, stylized celestial bodies. In the top left, there is a large planet with horizontal stripes. Below it, a smaller planet with a ring is visible. In the top right, an astronaut in a white suit is floating, holding a long, thin, looping rope. In the bottom right corner, there is a large, cratered moon. The overall aesthetic is clean and modern, with a focus on geometric shapes and a cool color palette.

## 4. Institutional ties

# Institutional ties

- ✦ **MOU of the 4 Ministries on LTC: MoPH, MOI, MoE, MSD&HS (2018)**



- ✦ **MOU between MoPH and the National Health Security Office (NHSO) to link LTC data (2018).**





# Institutional ties

✦ Under the Elderly Act 2003, all stakeholders from all sectors involved with elderly issue are committee of the National Committee for Older Persons and play a part in doing 20 years National Plan on the Elderly.





# Institutional ties

✦ At provincial, district and sub-district level : there were Provincial and District Quality of Life Development Committee to lead all issues including LTC for quality of life of people in each location.



Thank you for your kind attention

